

CANON

HOW TO TAKE STUNNING LANDSCAPE PHOTOS FOR INSTAGRAM

Travelling somewhere with beautiful scenery for a holiday? Or maybe you're always looking to capture the perfect sunset shot. Here are some easy rules to follow when shooting landscapes to make sure you get killer shots that will earn you all the 'likes' on Instagram.

TIP 01

USE THE RIGHT EQUIPMENT

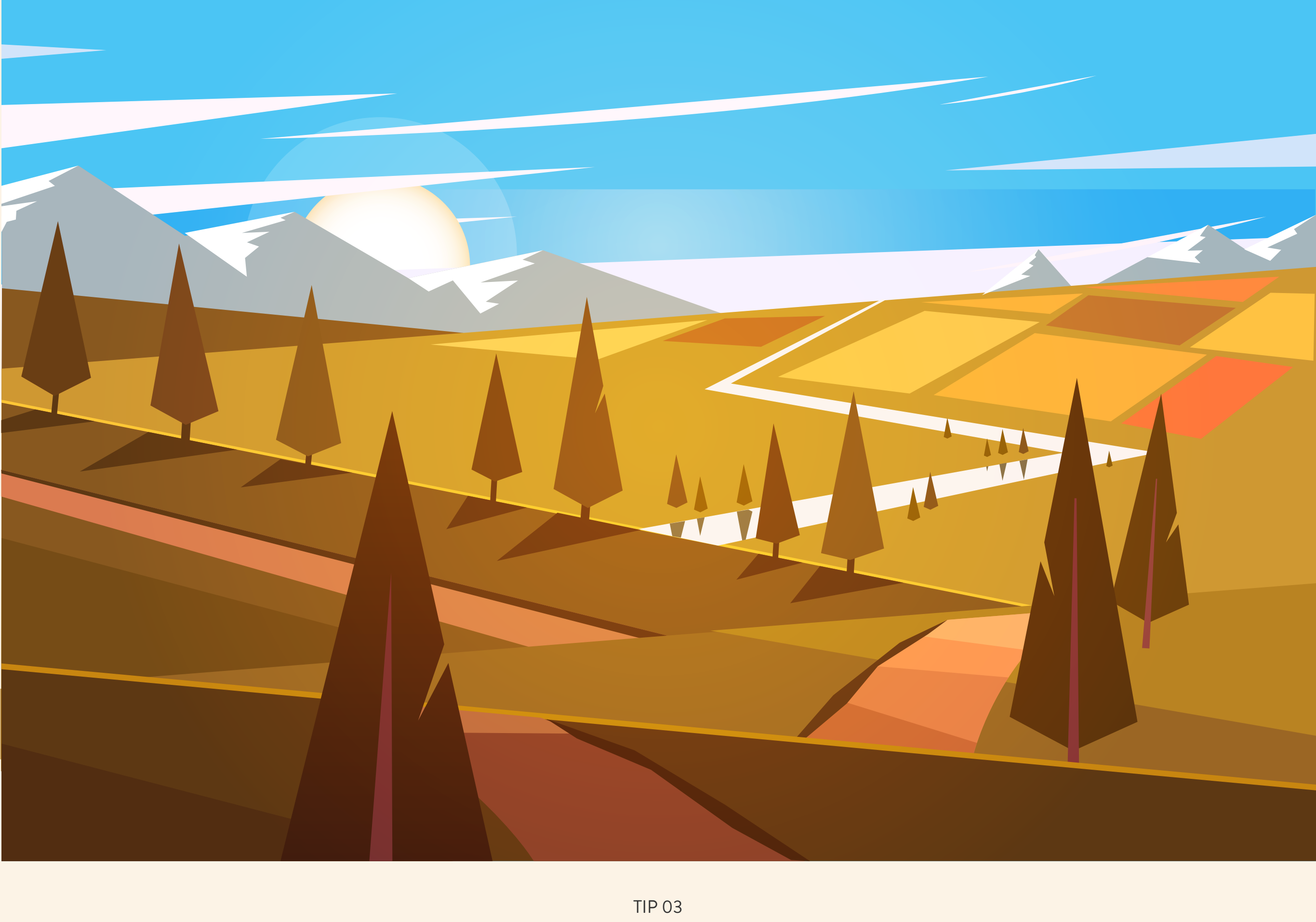
Bring a mirrorless camera like the Canon EOS M50 and a wide-angle lens such as EF-M11-22mm f/4.5-6.3 IS STM to capture landscape images with refined details and rich colours. To avoid blurred images, include a tripod to help you shoot the movement of clouds or water, as you'll need a slow shutter speed or long exposure. Use an ND filter to help cut down the light and achieve proper exposure in bright conditions.



TIP 02

SHOOT DURING THE GOLDEN HOUR

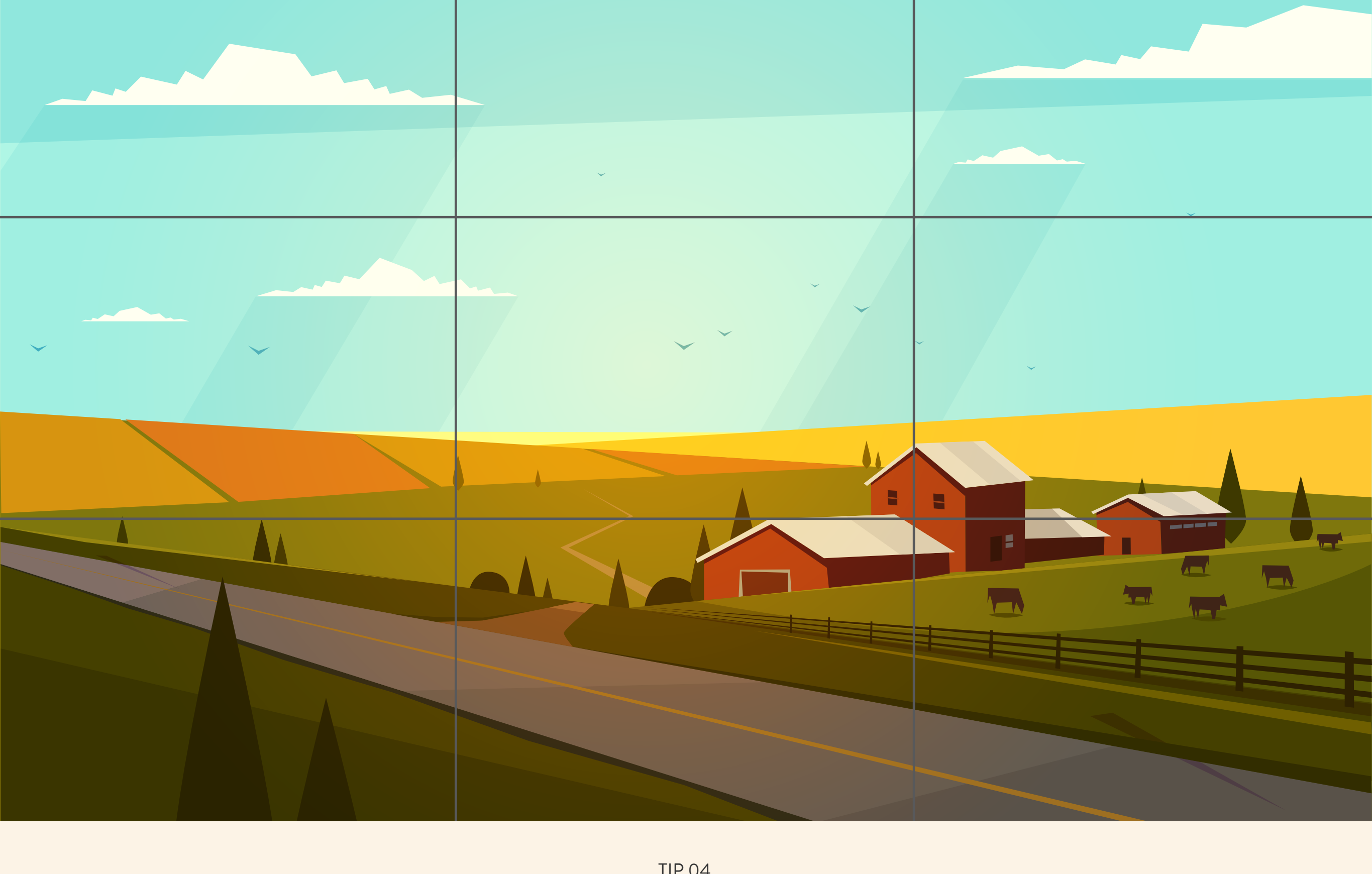
Whether it's the period just after sunrise or before sunset, this is the very best time to shoot landscape photos – the light becomes softer and is less harsh on your subjects. Colours are more vibrant and the contrast is greater.



TIP 03

WATCH YOUR COMPOSITION

Grab your viewer's attention to your landscape photos by using composition techniques. For example, having a main focal point draws your viewer's eyes to the subject in your photo. Or use diagonals to add movement by creating points of interest, and emphasise the distance between objects in the foreground and background to add depth.



TIP 04

FIND A WIDE BACKDROP

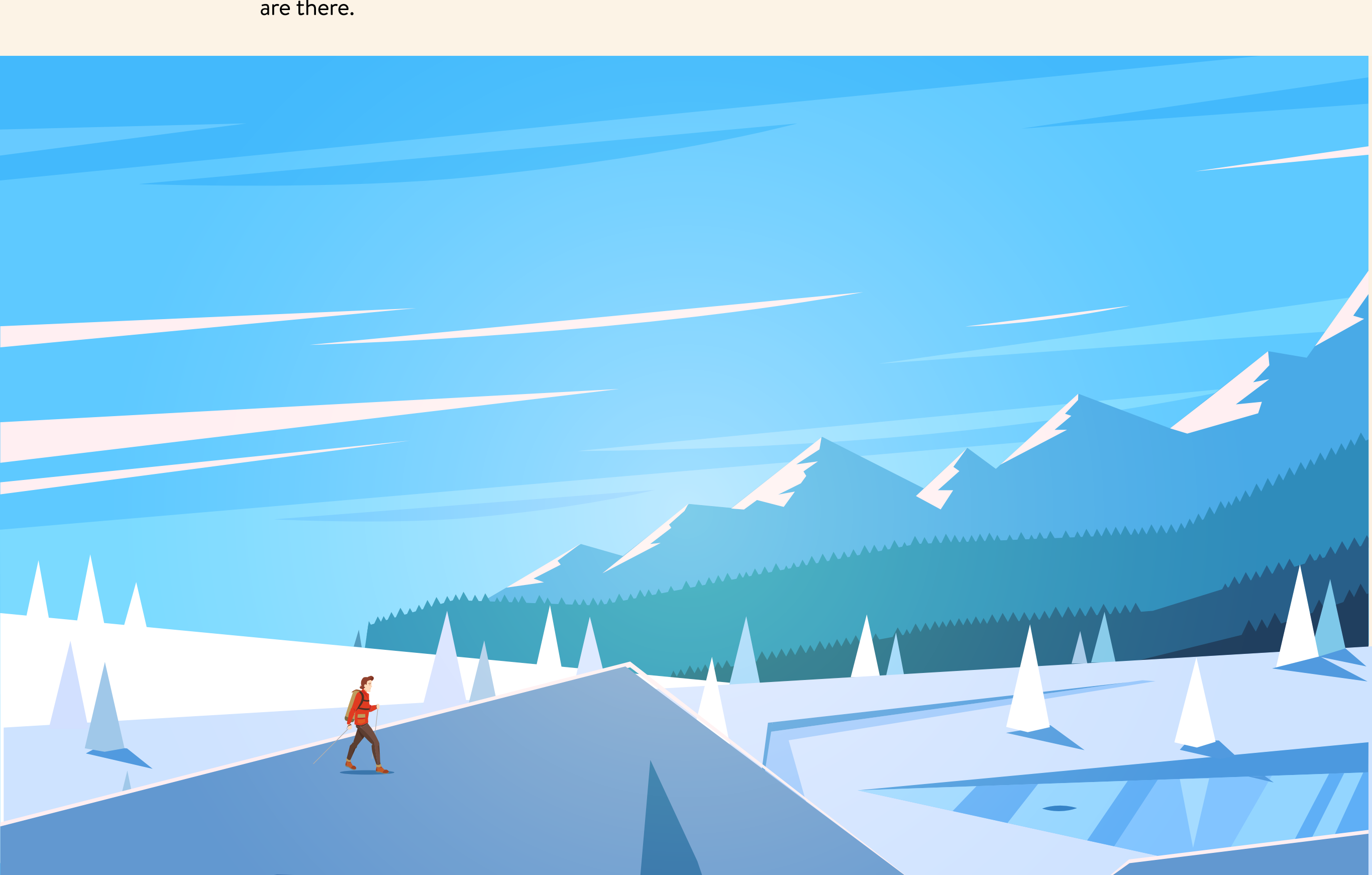
Whether it's a glistening ocean or a vast open field, go out there and find a backdrop wide enough to immerse yourself in. Or hike to the mountain peak and take in the larger-than-life view with your camera.



TIP 05

CREATE PERSPECTIVE WITH PEOPLE

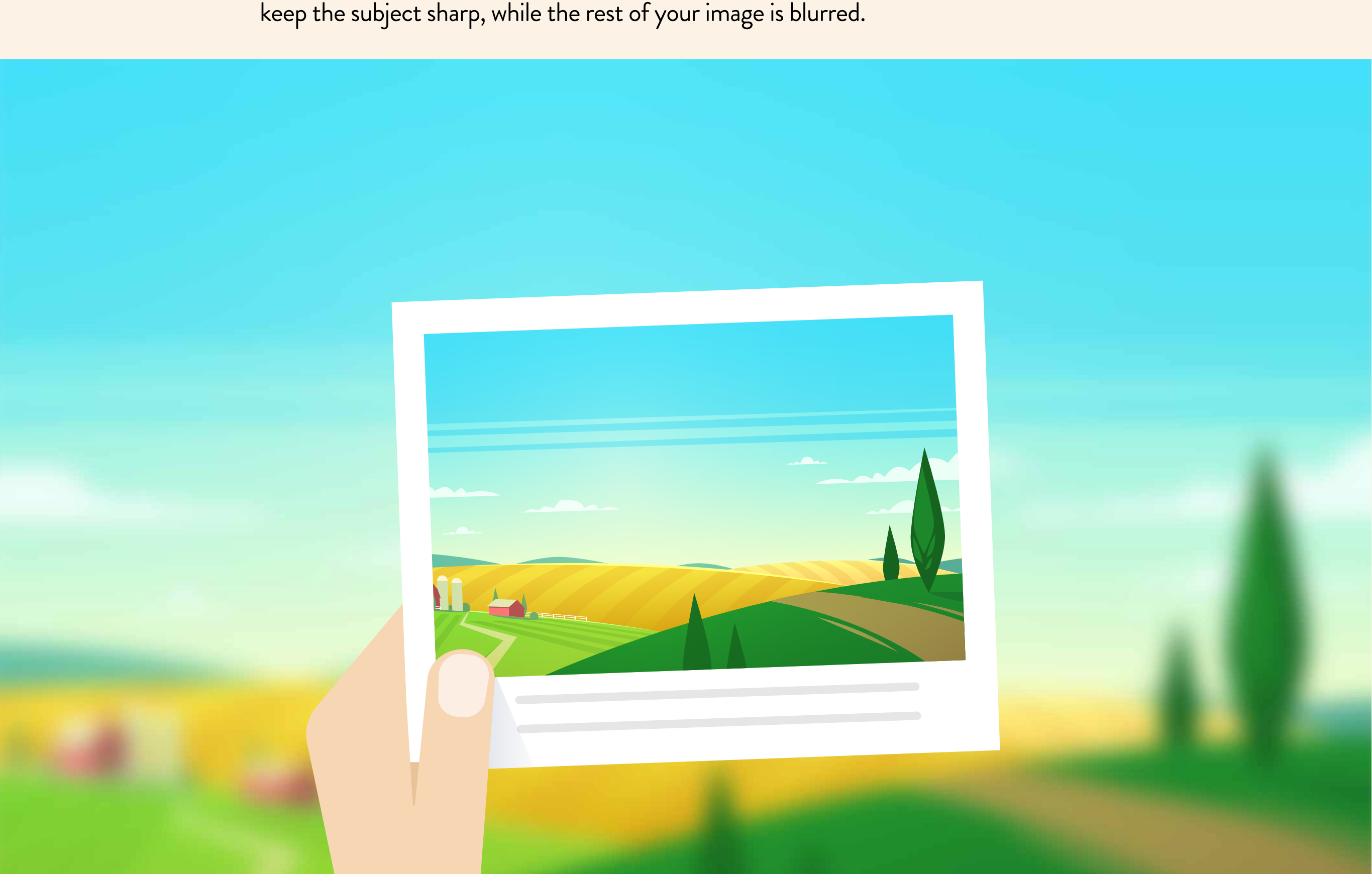
Include a human element to give your viewer a sense of life and scale to your landscape photos. It also helps them relate to the splendor of the setting and feel like they are there.



TIP 06

MASTER DEPTH OF FIELD

A wider depth of field is necessary to help you capture beautiful landscape photos where most of the photo is sharp. Or get creative by using a shallow depth of field to keep the subject sharp, while the rest of your image is blurred.



USE THESE SIMPLE TIPS TO CAPTURE LANDSCAPE PHOTOS THAT TAKE YOU RIGHT BACK TO WHERE YOU ONCE STOOD.

www.snapshot.canon-asia.com