

# CANON

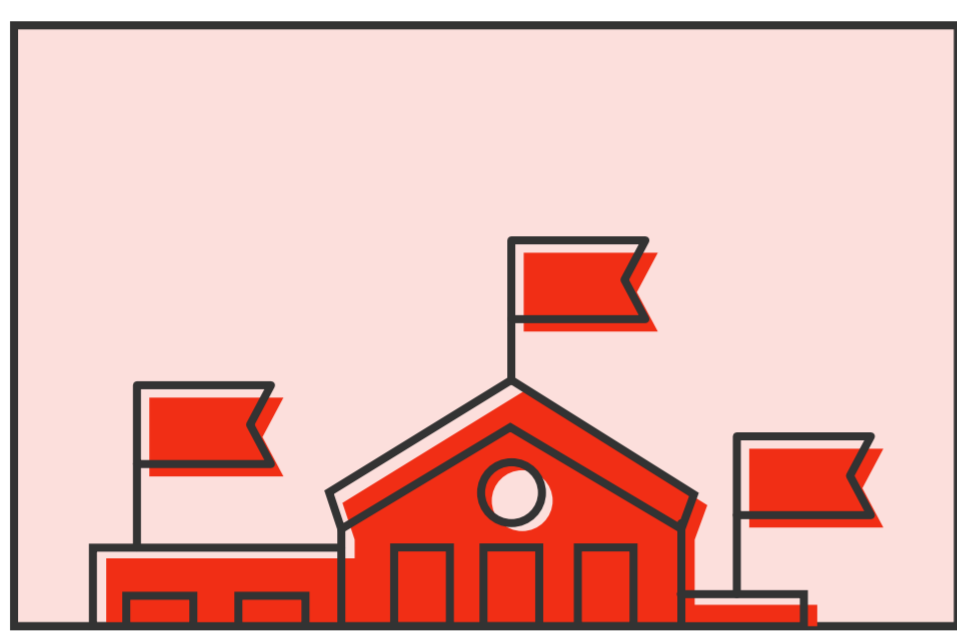
## RULE OF ODDS VS RULE OF SYMMETRY IN ARCHITECTURAL PHOTOGRAPHY

While taking photos of buildings may seem easy, framing a large structure with repetitive features in an interesting way could prove to be a challenge. Without the right techniques, your composition could be drowned out by a busy surrounding. Discover how using the Rule of Odds and Rule of Symmetry can help you to capture aesthetically balanced and visually exciting architectural photos.

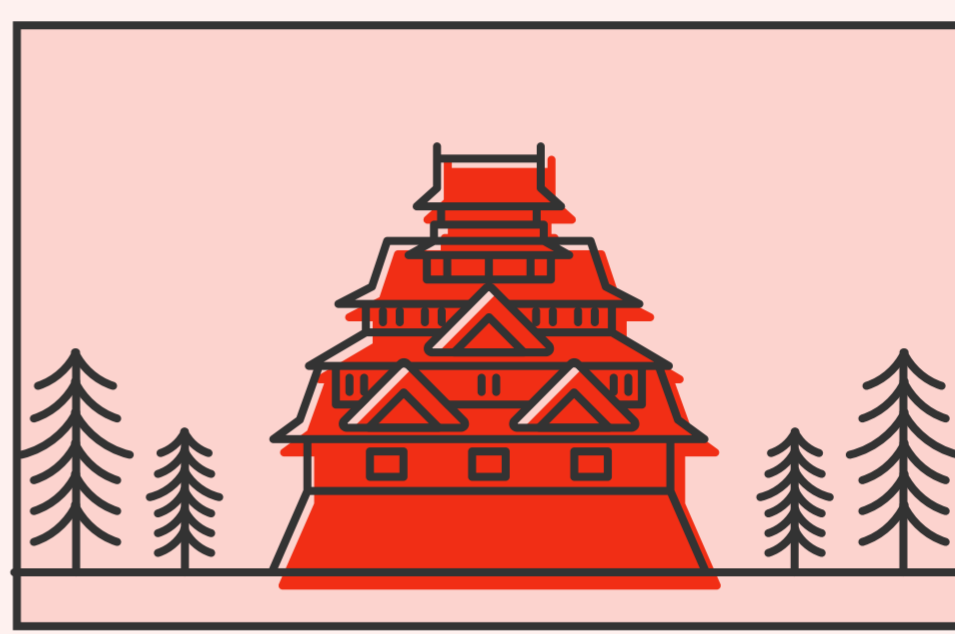
### RULE OF ODDS

### RULE OF SYMMETRY

#### WHAT IS IT?

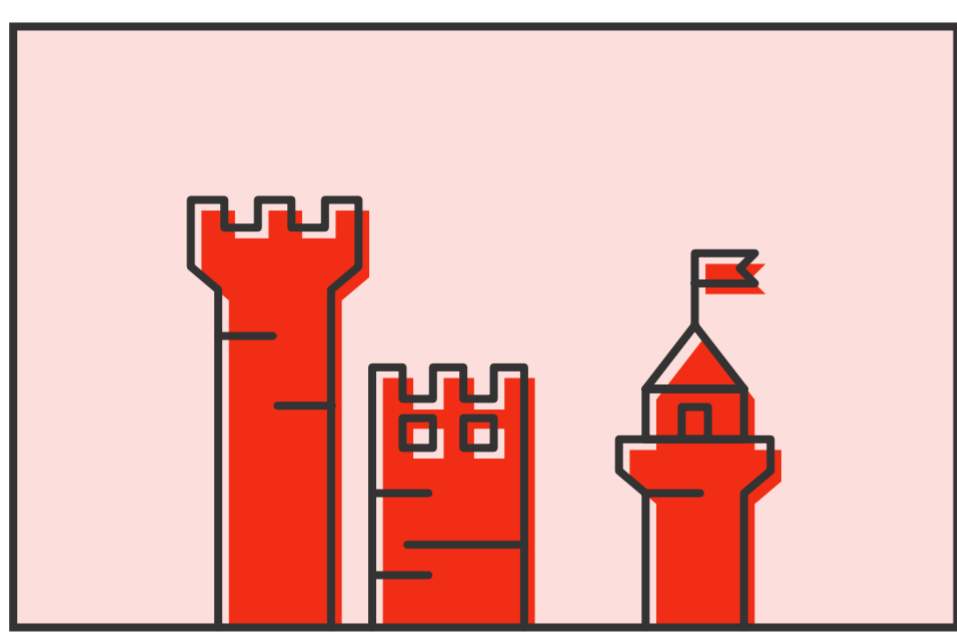


The human eye is naturally drawn to odd-numbered groups as they allow our gaze to flow between objects without splitting them into pairs. Small groups of 3 or 5 work best without being dismissed as a collective mass.

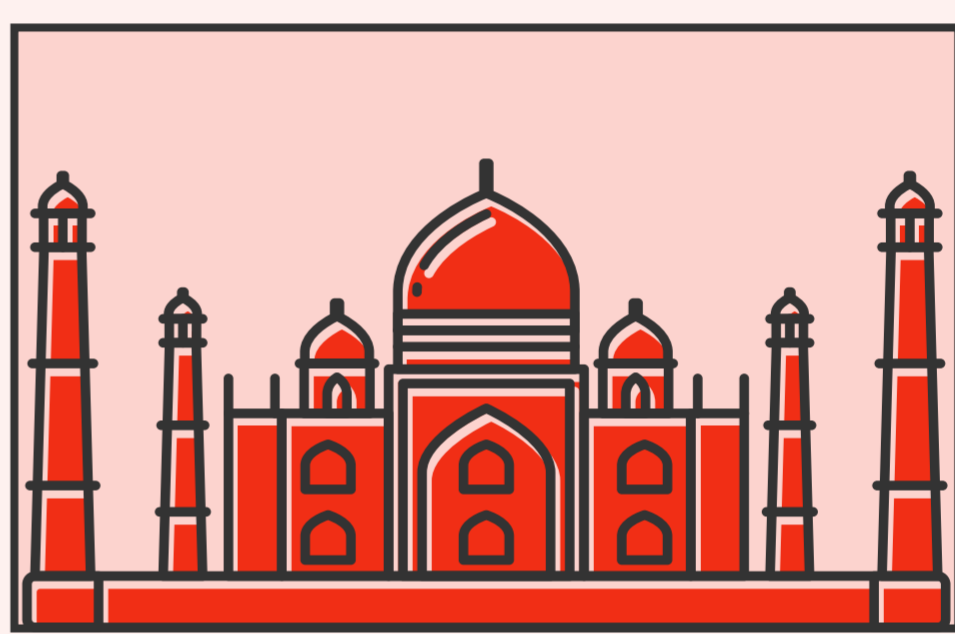


Symmetry is all about finding harmony. Unlike other composition techniques, the aim is to minimise contrast between size, shape, colour, line, and texture, to create a strong statement about your subject.

#### WHY YOU SHOULD USE IT IN YOUR PHOTOGRAPHY

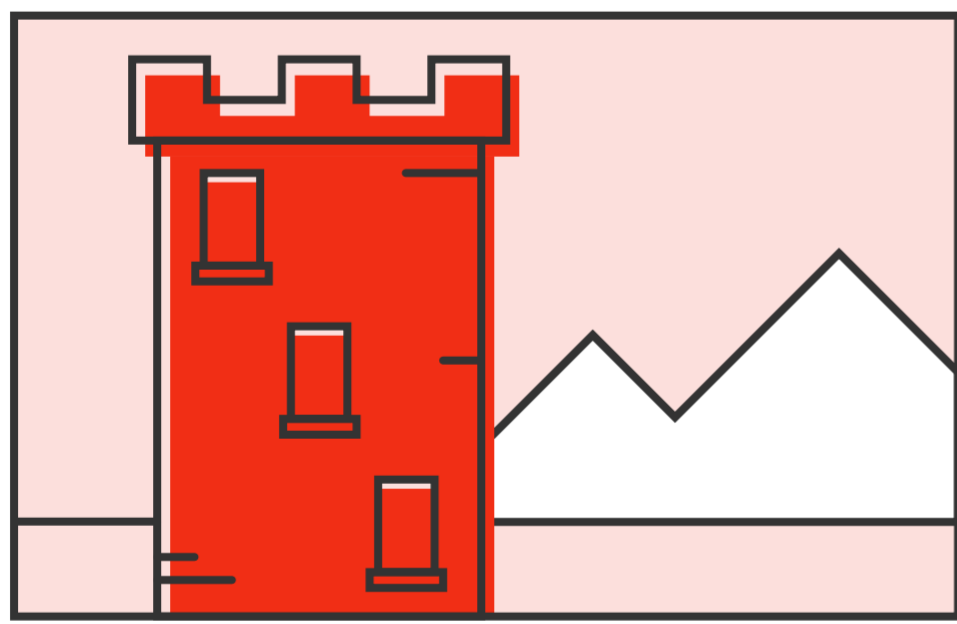


Buildings often have repeated structures, such as rows of pillars or towers, which could be visually repetitive. By focusing your subject into a group of 3 or 5 patterns, this draws your viewer's eye into the image.

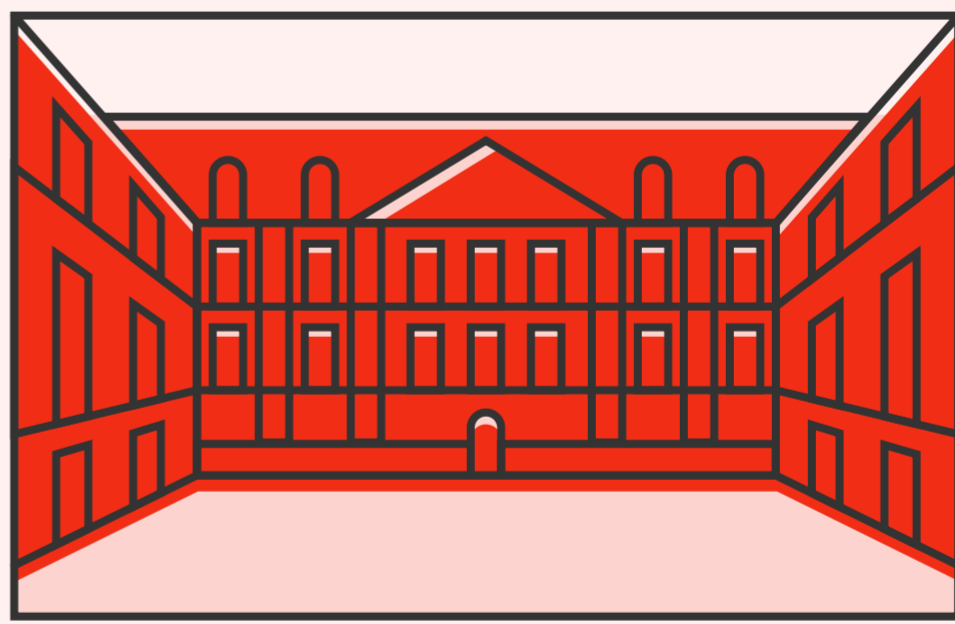


Geometric shapes form the foundation of any architecture. Learning to take advantage of these linear structures is vital in creating a balanced and powerful composition that instantly catches your viewer's eye.

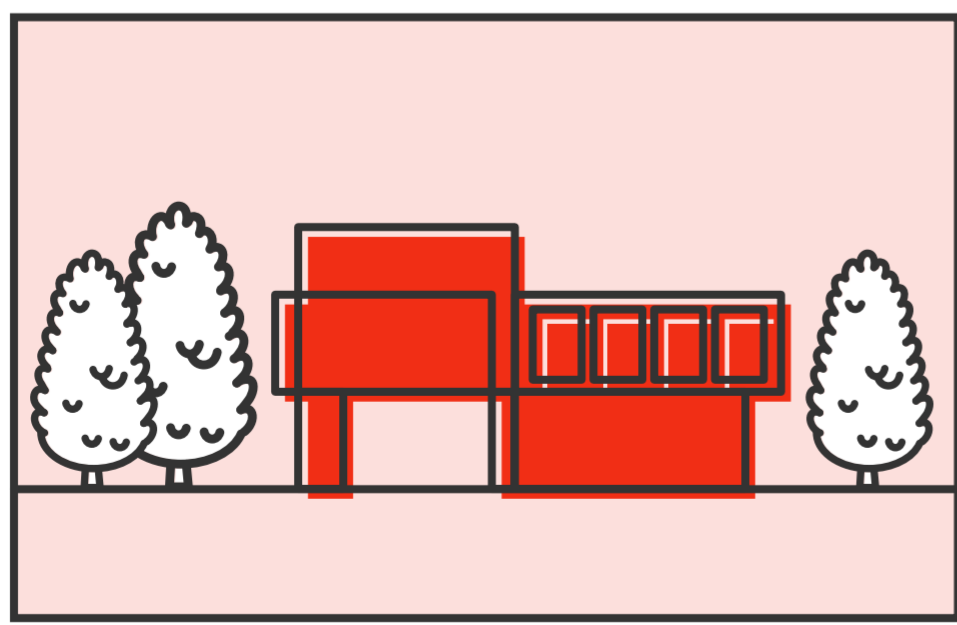
#### HOW TO COMPOSE YOUR SHOTS



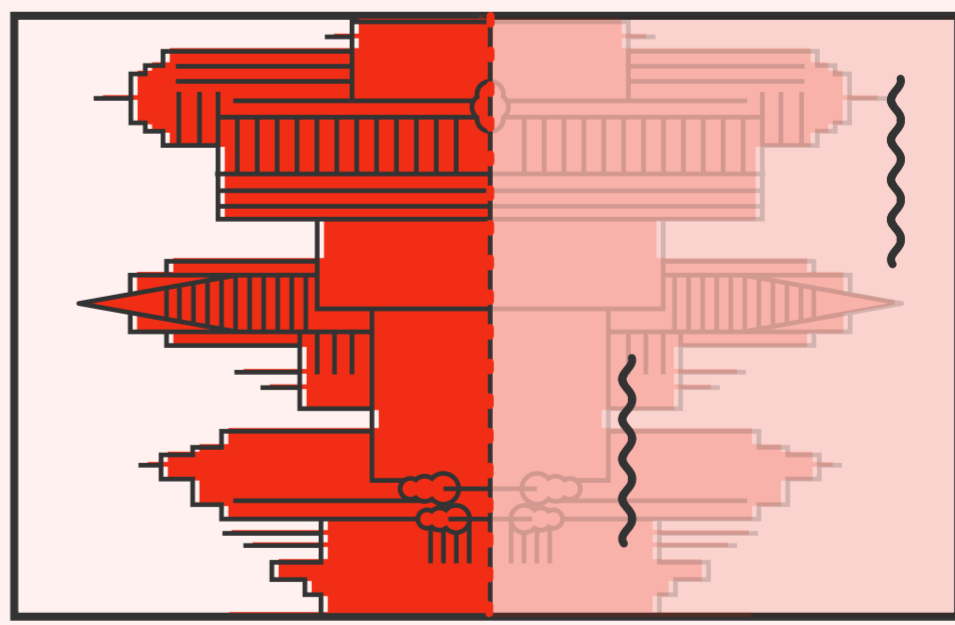
Look for repeated patterns within a building, such as arches, windows, pillars, and doors. Use them to anchor your composition by cropping the frame to include only 3 of these objects.



Stand directly in the middle of or facing the building so one side of the frame mirrors the other to capture a perfectly symmetrical photo. Keep your camera parallel to the building and use lines within the structure to help you align the shot.



Add dynamism and a sense of scale to minimalist architecture by including 3 or 5 external elements such as people or trees within the frame.



Symmetry in reflections can create surreal images that catch your viewer's eye. When shooting, look for where the water line is and align it to emphasise symmetry. Flip the image to get your viewer guessing which is the real subject and which is the reflection.

WITH THESE TWO RULES AS GUIDELINES, GET OUT THERE AND PRACTISE SO YOU CAN CAPTURE CLEAN AND VISUALLY STRIKING ARCHITECTURE PHOTOS.