

CANON

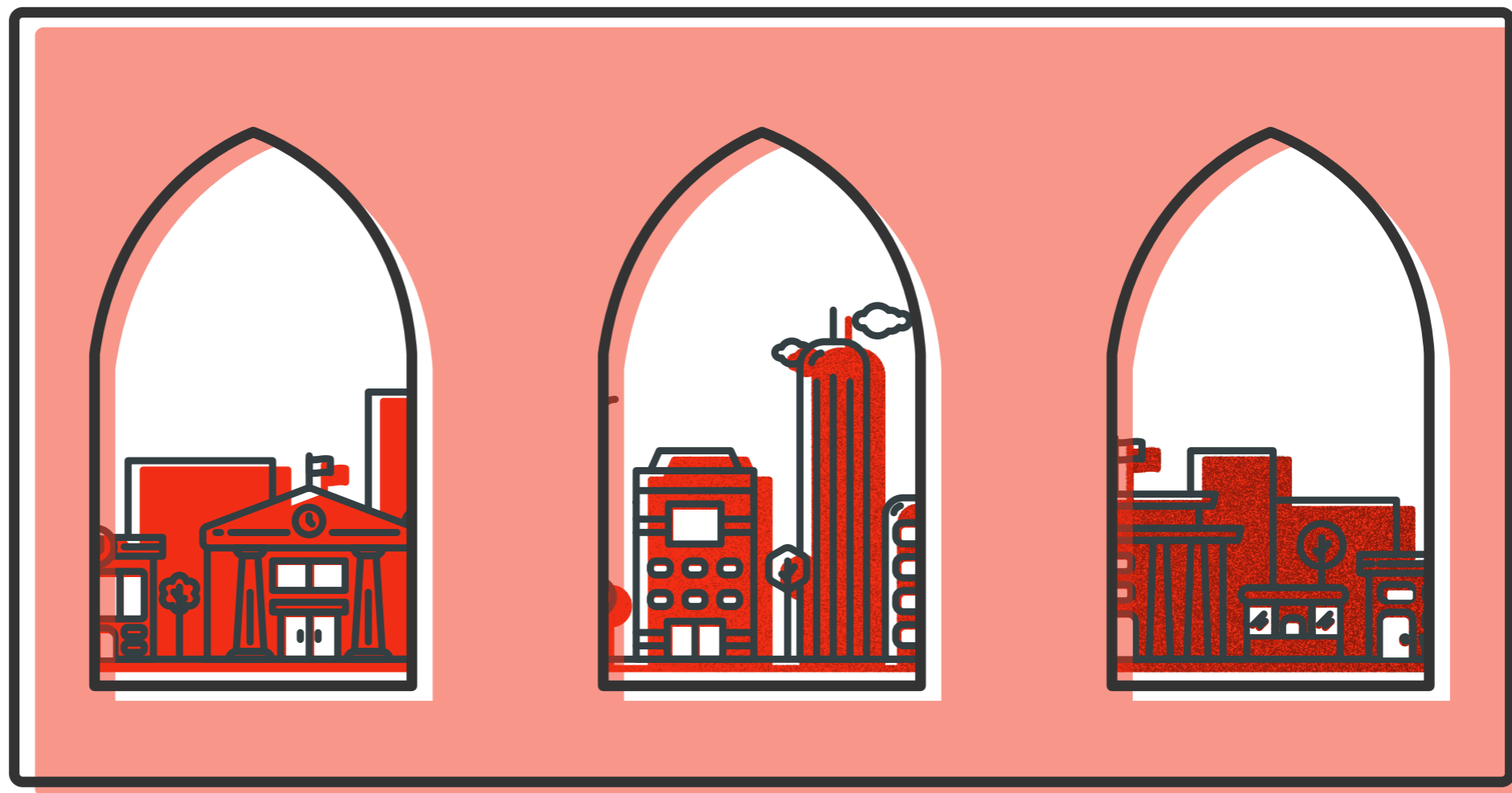
CREATIVE WAYS TO FRAME YOUR TRAVEL PHOTOS

Framing is a popular technique within a composition that emphasises your subject by adding a focal point so your viewer knows exactly where to look.

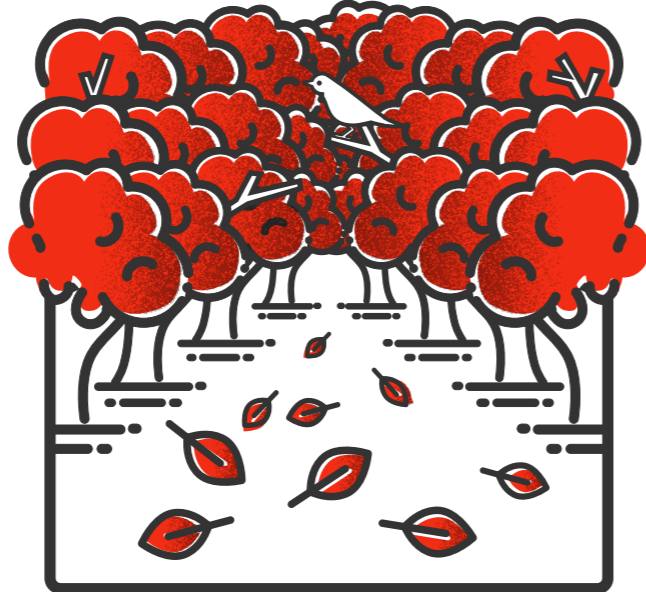
Learn how to master this technique to achieve more interesting and engaging travel photos.

WHAT | HERE'S WHAT YOU NEED TO KNOW ABOUT FRAMING IN PHOTOGRAPHY

Framing draws focus to the subject by covering other parts of the image with something in the scene. You can find frames everywhere - from natural elements such as tree trunks, to light and shadow, and unexpected arrangements of things created by the human hand.



WHY | 3 REASONS WHY YOU SHOULD FRAME YOUR SHOTS



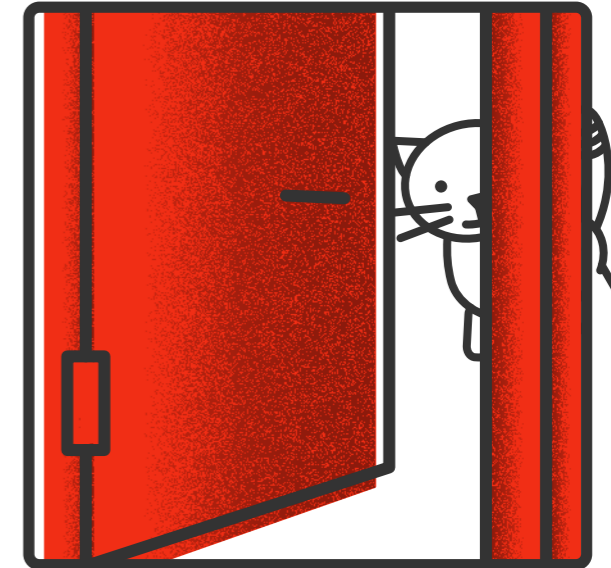
Give context

The dense trees and leaves that frame this image indicate it was shot in the height of autumn.



Bring focus

Not only does framing lead your viewer's eyes in the photo, but creates a flow that keeps them there longer.



Add intrigue

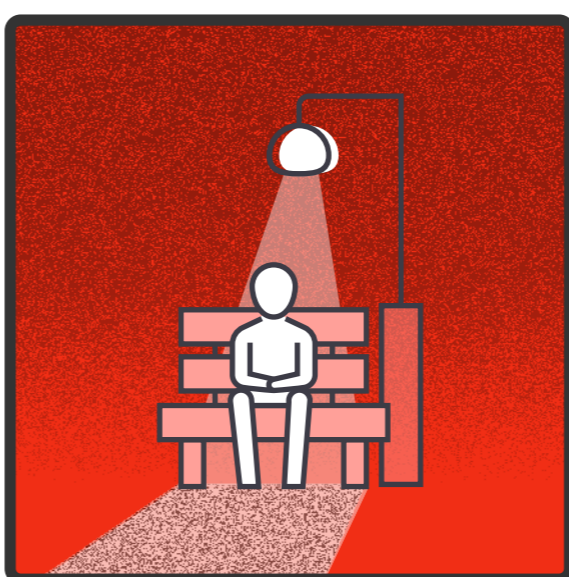
With the help of clever framing, your viewer is able to wonder or imagine what's going on beneath the frame.

HOW | 3 WAYS TO FRAME WHEN COMPOSING YOUR SHOTS



Using architectural elements

Look for arches, doorways or any area that give you a 'window' to shoot through. This can work well for sightseeing in urban or rural areas.



Using light and shadow

Light and shadows can help to isolate your subject and ensure it is the most important part of the photo, while the rest of the image fades to black.



Using subframing

Have a sub-frame within your frame to add depth and bring your viewers' eyes straight on to the subject.